

PARCEL "J"

Area=172200.04 sq. ft
3.95 Acres

PARCEL "E"

Area=411120.40 sq. ft
9.44 Acres

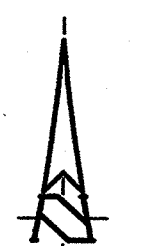
PARCEL "I"

Area=568560.43 sq. ft
13.05 Acres

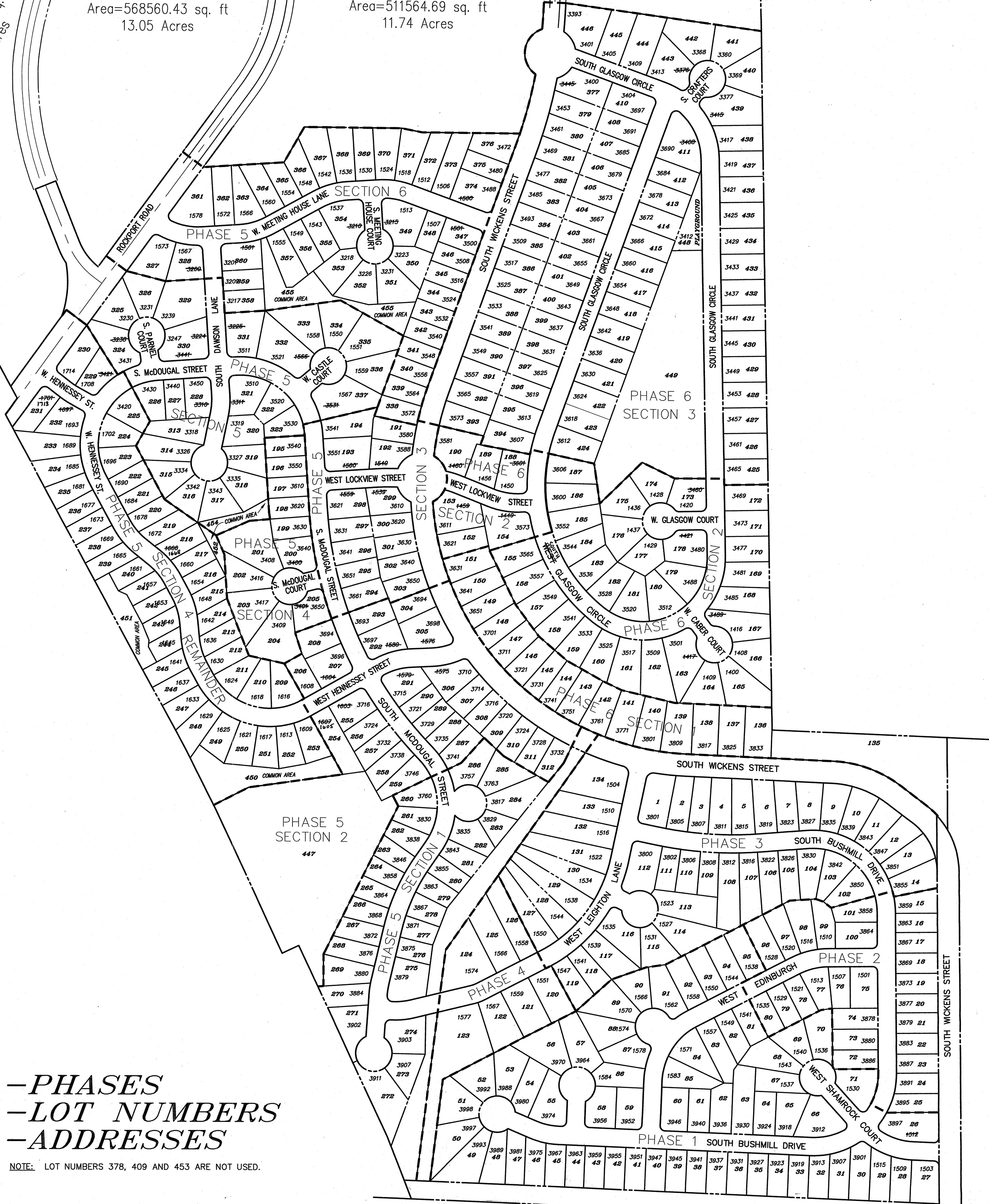
PARCEL "K"

Area=511564.69 sq. ft
11.74 Acres

PARCEL "G"
Area=1593670.07 sq. ft
36.47 Acres



Scale 1" = 100 ft
OCTOBER 27, 2003



-PHASES
-LOT NUMBERS
-ADDRESSES

NOTE: LOT NUMBERS 378, 409 AND 453 ARE NOT USED.

THE HIGHLANDS